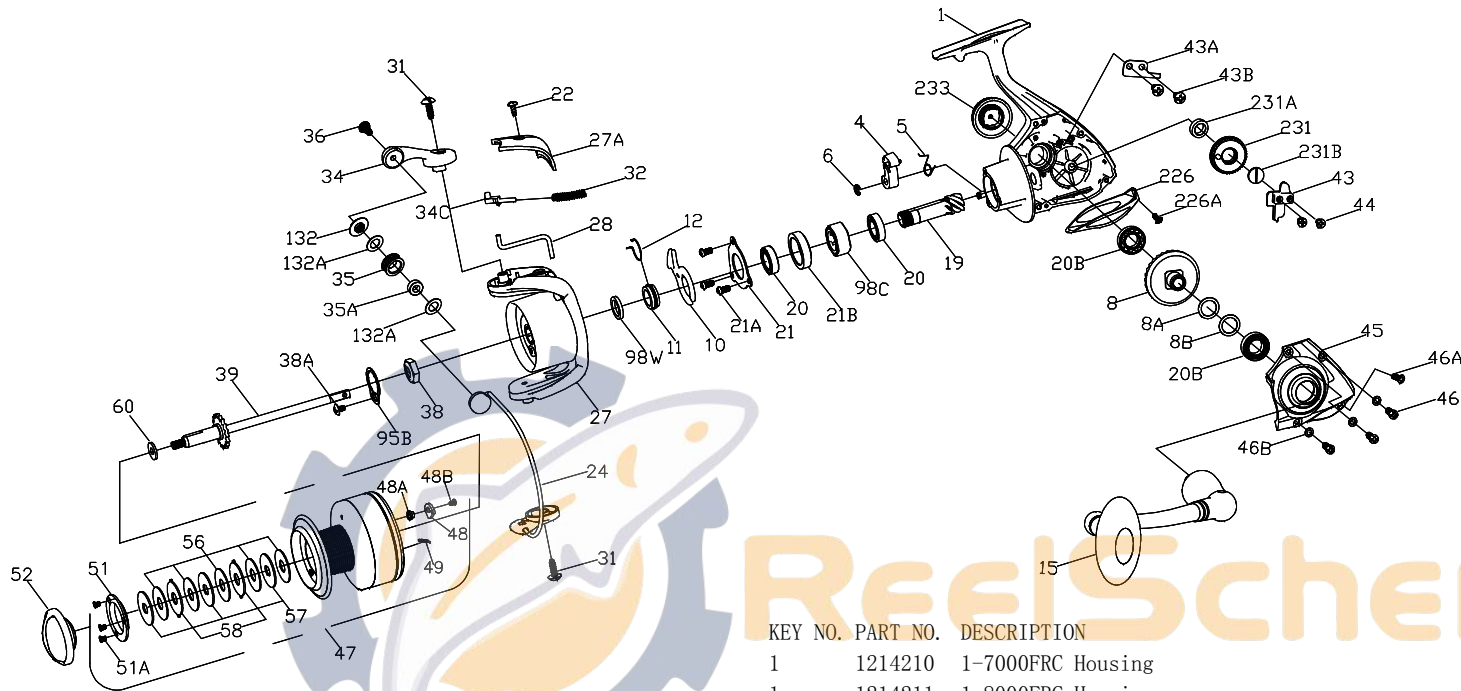




PARTS LIST FOR MODEL FIERCE 7000/8000
REEL PART NO.1206123/1206125



KEY NO.	PART NO.	DESCRIPTION
27	1214216	27-8000FRC Rotor (w/weight & screw)
27A	1214217	27A-7000FRC Bail Pivot Cover
28	1214218	28-7000FRC Trip Lever
28	1204078	28-8000PUR Trip Lever
31	1204039	31-6000PUR Bail Arm Screw (2 req)
32	1200520	32-6000SG Bail Spring
34	1214201	34-6000FRC Bail Arm
34C	1191656	34C-7000SG Pivot Arm
35	1191674	35-3000SG Line Roller
35A	1203992	35A-3000PUR Line Roller Bushing
36	1203993	36-3000PUR Bail Stud Screw
38	1191731	38-7000SG Rotor Nut
38A	1203995	38A-3000PUR Rotor Locking Plate Screw
39	1214219	39-7000FRC Spool Shaft Assembly
39	1214220	39-8000FRC Spool Shaft Assembly
43	1191809	43-7000SG Crosswind Block
43A	1191821	43A-7000SG Crosswind Block Plate
43B	1191826	43B-3000SG Crosswind Block Plate Screw
44	1191845	44-5000SG Crosswind Block Screw (2 req)
45	1214221	45-7000FRC Housing Cover
46	1191903	46-5000SG Housing Cover Screw (3 req)
46A	1191906	46A-3000SG Housing Cover Screw A
46B	1191908	46B-5000SG Housing Cover Washer (3 req)
47	1214222	47-7000FRC Spool Complete
47	1214223	47-8000FRC Spool Complete
48	1211625	48-5000SG Click Tongue
48A	1211626	48A-5000SG Click Tongue Washer
48B	1211612	48B-5000SG Spool Click Screw
49	1211627	49-5000SG Click Tongue Spring
51	1191980	51-7000SG Retaining Spacer
51A	1191986	51A-3000SG Retaining Screw (3 req)
52	1214224	52-7000FRC Drag Knob Assembly
56	1192038	56-7000SG Drag Washer (5 req)
57	1192046	57-7000SG Keyed Washer (3 req)
58	1192055	58-7000SG Earred Washer (2 req)
60	1192062	60-5000SG Thrust Washer
95B	1192186	95B-5000SG Rotor Locking Plate
98C	1192215	98C-5000SG Clutch/Sleeve Assembly
98W	1216770	98W-7000FRC Clutch Washer
132	1192298	132-7000SG Roller Washer
132A	1192302	132A-3000SG Line Roller Washer (2 req)
226	1214225	226-7000FRC Rear Cover
226A	1191826	43B-3000SG Crosswind Block Plate Screw
231	1192507	231-7000SG Crosswind Gear
231A	1192511	231A-7000SG Bushing Crosswind Gear
231B	1192514	231B-7000SG Screw Crosswind Gear
233	1214209	233-5000FRC Bearing Cover Assembly

KEY NO.	PART NO.	DESCRIPTION
1	1214210	1-7000FRC Housing
1	1214211	1-8000FRC Housing
4	1190939	4-7000SG A/R Dog
5	1190966	5-5000SG A/R Dog Spring
6	1190979	6-5000SG Retaining Clip
8	1191021	8-7000SG Main Gear
8A	1216652	8A-7000FRC Shim
8B	1211632	8A-7000BTL Shim
10	1191068	10-7000SG A/R Holder
11	1191087	11-7000SG Bushing
12	1191090	12-5000SG A/R Bushing Spring
15	1211633	15-7000BTL Handle Assembly
19	1191244	19-7000SG Pinion
20	1204012	20-5000PUR Ball Bearing (2 req)
20B	1204068	20B-7000PUR Ball Bearing (2 req)
21	1192636	21-5000SG Bearing Retainer
21A	1192645	21A-5000SG Bearing Retainer Screw (3 req)
21B	1192650	21B-5000SG Collar
22	1204018	22-6000PUR Bail Pivot Cover Screw
24	1214213	24-7000FRC Bail Wire Assembly
24	1214214	24-8000FRC Bail Wire Assembly
27	1214215	27-7000FRC Rotor (w/weight & screw)